

## **RANGE**



This range of miniature bayonet connectors performs to the requirements of MIL-DTL-26482 Series 1 (Solder Termination). The range comprises 9 shell sizes and 25 shell styles. Configurations of contacts vary from 2 to 61, spread across the 9 shell sizes.

Connector shells are manufactured from aluminium alloy. The standard shell has a high resistance to corrosion with an olive drab chromate conversion over cadmium plate finish. Inserts are of polychloroprene. Operating temperature range is -55°C to +125°C. The connectors have gold-plated, non-removable, solder contacts.

Environmental Category	- 55/125/56
Low pressure Severity	- 44 millibars
Number of Contacts	- 2 to 61
Contact Termination	- Solder (Solder bucket and PCB)
Maximum Current Rating at 85°C:	
a. per individual contact in isolation:	- Size 20 - 7.5 amps - Size 16 - 13.0 amps
b. per contact through all contacts simultaneously:	- Size 20 - 5.0 amps - Size 16 - 10.0 amps
Contact Finish	- Gold Plated
Working Voltage DC or AC Peak (at sea level)	- 700 volts or 1200 volts
Sealing	- Environment Resistant with barrier or barrier and panel sealed
*Housing (Shell) Material	- Aluminium Alloy
*Housing (Shell) Finish	- Olive drab chromate conversion over cadmium plate.
*Housing (Shell) - Other materials and finishes available. Please contact factory.	



### CONTACT ARRANGEMENT AVAILABILITY

Shell size	Number of contacts																			
	2	3	4	5	6	7	8	10	11	12	14	15	16	19	21	23	26	32	39	41
08	08-02	08-03 08-08 08-33	08-04																	
10	10-02				10-06	10-07														
12		12-03					12-08	12-10			12-14									
14	14-02		14-04	14-05 14-22						14-12		14-15		14-19						
16			16-04				16-08										16-26			
18	18-02								18-11									18-32		
20													20-16						20-41	
22			22-04																	22-55
24																				24-61

08-02

08-03

08-98\*

08-33

08-04

10-02

10-06

10-07

12-03

12-08

12-10

12-14

14-02

14-04

14-05

14-12

14-15

14-19

14-22

16-04

16-08

16-26

18-02

18-11

18-32

20-16

20-41

22-04

22-55

24-61

● = size 20 contacts (voltage rating at sea level = 700V)    ○ = size 16 contacts (voltage rating at sea level = 1200V)    Not to scale  
 ○ = size 12 contacts (voltage rating at sea level = 1500V)    ○ = size 8 contacts (voltage rating at sea level = 1500V)  
 \* - planform 08-98 is equivalent to 8-3A according to VG 95328 specification  
 Table shows plug face of connectors.



## MATING COMBINATIONS

### FIXED CONNECTORS

	<p>Fixed, square flange mounting with accessory thread, with or without accessories</p> <p>Styles: 00T, 00E, 00EA, 00F, 00J</p>
	<p>Fixed, square flange mounting without accessory thread</p> <p>Style: 02A, 02B, 02K</p>
	<p>Free coupler with accessory thread, with or without accessories</p> <p>Styles: 01T, 01E, 01EA, 01F, 01J</p>
	<p>Fixed, single hole mounting with 'o' ring panel seal without accessory thread</p> <p>Style: 07A, 07B</p>
	<p>Fixed, single hole mounting with 'o' ring panel seal, internal accessory thread, with or without accessories</p> <p>Styles: 07T, 07E, 07F,</p>
	<p>Fixed, single hole mounting with 'o' ring panel seal, external accessory thread, with or without accessories</p> <p>Style: 47T</p>

### FREE CONNECTORS

	<p>Free, fine knurled coupling nut with or without grounding fingers, with accessory thread, with or without accessories</p> <p>Styles: 06T, 06E, 06EA, 06F, 06J, 06TG, 06EG, 06EAG, 06FG</p>
	<p>Free, coarse knurled coupling nut with or without grounding fingers, with accessory thread, with or without accessories</p> <p>Styles: 46T, 46E, 46EA, 46F, 46J, 46TG, 46EG, 46EAG, 46FG</p>





## ORDERING INFORMATION

EXAMPLE: BH 06 E 16 26 P N 0

### Shell style

- 00 – Fixed, square flange mounting with accessory thread
- 01 – Free coupler
- 02 – Fixed, square flange mounting
- 06 – Free, fine knurled coupling nut
- 07 – Fixed, single hole mounting with panel seal, with or without internal accessory thread
- 46 – Free, coarse ribbed coupling nut
- 47 – Fixed, single hole mounting with panel seal and external accessory thread

### Class

- A – Connector without accessory thread
- T – Connector without grommet and accessory fittings
- E – Connector with grommet and grommet nut
- F – Connector with grommet and cable clamp
- EA – Connector with A endbell adaptor
- J – Connector with J sealing gland
- TG – Free connector without grommet and accessory fittings, with grounding fingers
- EG – Free connector with grommet and grommet nut, with grounding fingers
- FG – Free connector with grommet and cable clamp, with grounding fingers
- EAG – Free connector with A endbell adaptor and grounding fingers

### Shell size

- 08 - 24 inclusive in even number increments
- Represents dia. of female shell in 1.6mm steps

### Contact

- P – Pin (male contact)
- S – Socket (female contact)

### Orientation/Polarisation

- N – Neutral (normal) orientation and polarisation
- W } Orientation by insert rotation
- X }
- Y }
- Z }
- B } Polarisation by relative displacement
- C } of keys/keyways – refer to page
- E }

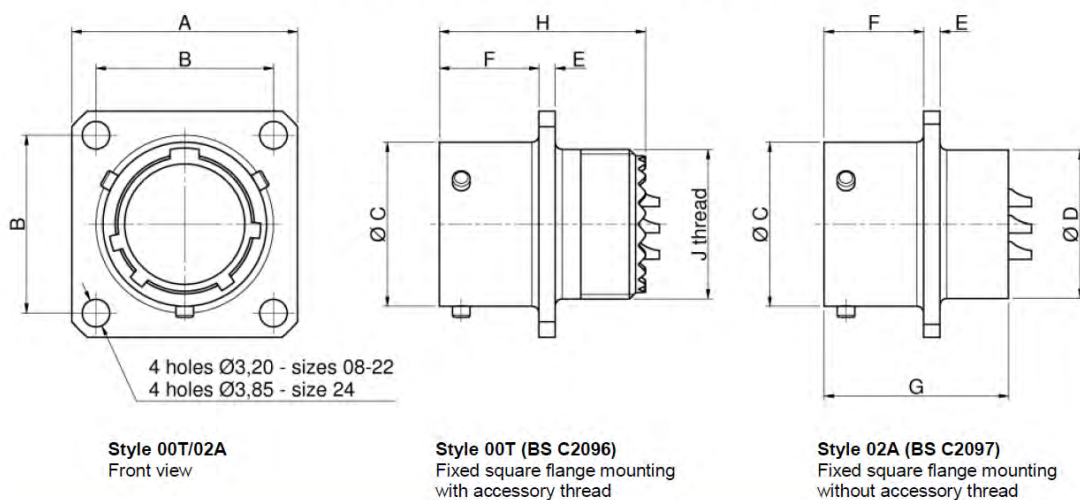
### Variant

- 0 = No variant required
- 101E – Zinc cobalt, olive drab
- 003E – Zinc cobalt, black
- 203 – PCB contacts Ø0,94mm x 2mm long
- 207 – PCB contacts Ø0,76mm x 2mm long



## LAYOUT DIMENSIONS

### STYLES 02A & 00T CONNECTORS

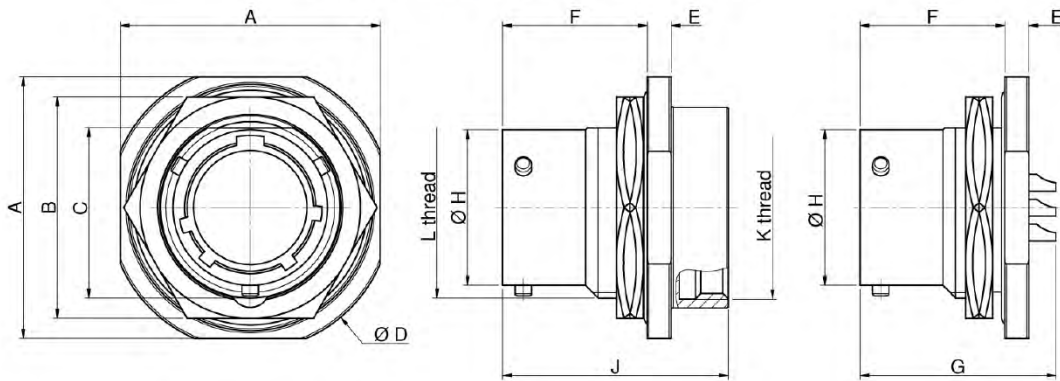


Shell size	A square max [mm]	B ± 0.15 [mm]	ØC max [mm]	ØD max [mm]	E max [mm]	F max [mm]	G max [mm]	H [mm]	J thread to BS 1580 2A
08	21.03	15.08	12.04	11.91	2.00	11.73	21.40	25.35	0.4375" – 28 UNEF
10	24.23	18.26	15.01	15.06	2.00	11.73	21.40	25.35	0.5625" – 24 UNEF
12	26.59	20.62	19.07	18.26	2.00	11.73	21.40	25.35	0.6875" – 24 UNEF
14	28.98	23.01	22.25	21.41	2.00	11.73	21.40	25.55	0.8125" – 20 UNEF
16	31.34	24.61	25.42	24.61	2.00	11.73	21.40	25.55	0.9375" – 20 UNEF
18	33.73	26.97	28.60	27.76	2.00	11.73	21.40	25.86	1.0625" – 18 UNEF
20	36.91	29.36	31.77	30.96	2.80	14.91	27.00	28.80	1.1875" – 18 UNEF
22	40.08	31.75	34.95	34.11	2.80	14.91	27.00	28.80	1.3125" – 18 UNEF
24	43.26	34.93	38.12	37.31	2.80	15.75	28.60	30.40	1.4375" – 18 UNEF



## LAYOUT DIMENSIONS

### STYLES 07A & 07T CONNECTORS



**Style 07T/07A**  
Front view

**Style 07T**  
Fixed single hole mounting with 'O' ring  
panel seal and internal accessory thread

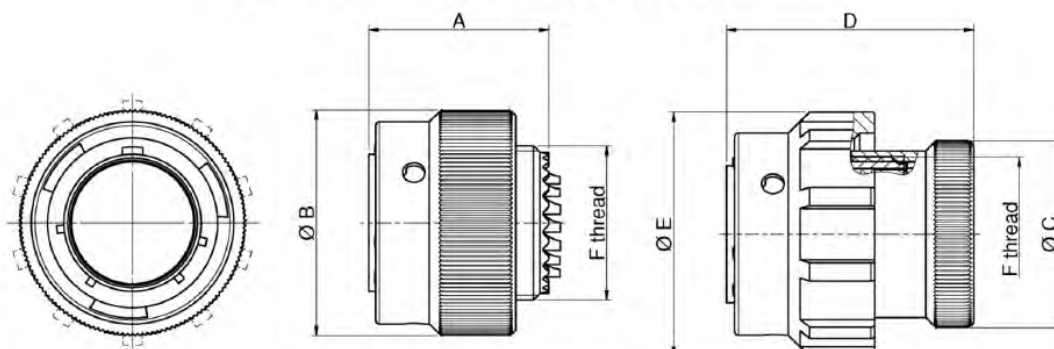
**Style 07A (BS C2099)**  
Fixed single hole mounting with 'O' ring  
panel seal and without accessory thread

Shell size	A max [mm]	B max [mm]	C max [mm]	ØD max [mm]	E max [mm]	F max [mm]	G max [mm]	ØH max [mm]	J max [mm]	L thread to BS 1580 2A	K thread to BS 1580 2B
08	24.23	19.48	13.46	27.38	3.48	18.34	26.41	12.04	28.10	0.5625" – 24 UNEF	0.625" – 24 UNEF
10	27.38	22.66	16.63	30.55	3.48	18.34	26.41	15.01	28.10	0.6875" – 24 UNEF	0.75" – 20 UNEF
12	32.15	27.41	20.77	35.33	3.48	18.34	26.41	19.08	28.10	0.875" - 20 UNEF	0.875" – 20 UNEF
14	35.33	30.61	23.93	38.50	3.48	18.34	26.41	22.25	28.10	1" – 20 UNEF	1" – 20 UNEF
16	38.51	33.76	27.08	41.68	3.48	18.34	26.41	25.43	28.10	1.125" – 18 UNEF	1.125" – 18 UNEF
18	41.68	36.96	30.25	44.86	3.48	18.34	26.41	28.60	28.10	1.25" - 18 UNEF	1.25" - 18 UNEF
20	46.43	40.11	33.42	49.63	4.27	23.11	30.48	31.78	31.80	1.375" - 18 UNEF	1.375" - 18 UNEF
22	49.63	43.31	36.60	52.78	4.27	23.11	30.48	34.95	31.80	1.5" - 18 UNEF	1.5" - 18 UNEF
24	52.78	46.46	39.78	55.96	4.27	23.95	30.48	38.13	33.60	1.625" - 18 UNEF	1.625" - 18 UNEF



## LAYOUT DIMENSIONS

### STYLES 06T/06TG & 06E/06EG CONNECTORS STYLES 46T/46TG & 46E/46EG CONNECTORS



Style 06T/06TG/06E/06EG  
Style 46T/46TG/46E/46EG (dashed line)  
Front view

(Fine knurled coupling nut shown)

(Coarse ribbed coupling nut shown)

**Style 06T (BS C2092)**  
Free, fine knurled coupling nut  
**Style 06TG (BS C2093)**  
Free, fine knurled coupling nut with  
grounding fingers  
**Style 46T (BS C2094)**  
Free, coarse ribbed coupling nut  
**Style 46TG (BS C2095)**  
Free, coarse ribbed coupling nut with  
grounding fingers

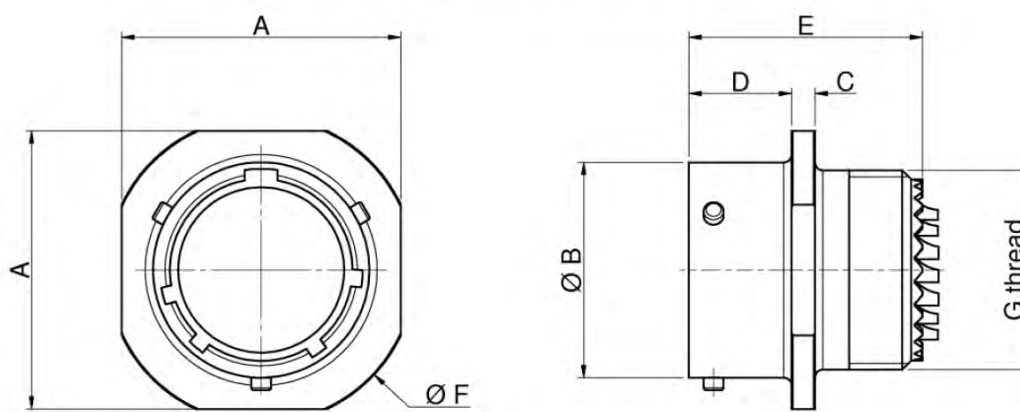
**Style 06E**  
Free, fine knurled coupling nut with  
grommet and grommet nut  
**Style 06EG**  
Free, fine knurled coupling nut with  
grommet, grommet nut and grounding  
fingers  
**Style 46E**  
Free, coarse ribbed coupling nut with  
grommet and grommet nut  
**Style 46E**  
Free, coarse ribbed coupling nut with  
grommet, grommet nut and grounding  
fingers

Shell size	A [mm]	ØB max [mm]	ØC max [mm]	D max [mm]	ØE max [mm]	F thread to BS 1580 2A
08	24.21	19.86	15.00	35.89	22.10	0.4375" – 28 UNEF
10	24.21	23.52	18.29	35.89	24.90	0.5625" – 24 UNEF
12	24.21	26.49	21.84	35.89	29.20	0.6875" – 24 UNEF
14	24.21	30.05	25.15	35.89	35.20	0.8125" – 20 UNEF
16	24.41	33.15	28.19	36.09	37.60	0.9375" – 20 UNEF
18	24.71	35.33	31.50	36.39	40.40	1.0625" – 18 UNEF
20	26.16	38.89	34.54	38.61	43.45	1.1875" – 18 UNEF
22	26.16	42.06	37.60	38.61	46.25	1.3125" – 18 UNEF
24	27.74	45.13	40.90	40.18	49.95	1.4375" – 18 UNEF



## LAYOUT DIMENSIONS

### STYLES 01T CONNECTORS



**Style 01T (BS C2101)**

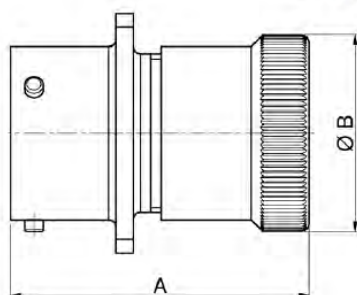
Fixed, cable mounting connector with accessory thread

Shell size	A square max [mm]	ØB max [mm]	C max [mm]	D max [mm]	E max [mm]	ØF max [mm]	G thread to BS 1580 2A
08	21.03	12.04	2.80	10.95	25.35	24.33	0.4375" – 28 UNEF
10	24.23	15.01	2.80	10.95	25.35	27.48	0.5625" – 24 UNEF
12	26.59	19.07	2.80	10.95	25.35	29.87	0.6875" – 24 UNEF
14	28.98	22.25	2.80	10.95	25.55	32.26	0.8125" – 20 UNEF
16	31.34	25.42	2.80	10.95	25.55	34.64	0.9375" – 20 UNEF
18	33.73	28.60	2.80	10.95	25.86	37.03	1.0625" – 18 UNEF
20	36.91	31.77	3.32	14.37	28.80	40.18	1.1875" – 18 UNEF
22	40.08	34.95	3.32	14.37	28.80	43.38	1.3125" – 18 UNEF
24	43.26	38.12	3.32	15.22	30.40	46.53	1.4375" – 18 UNEF

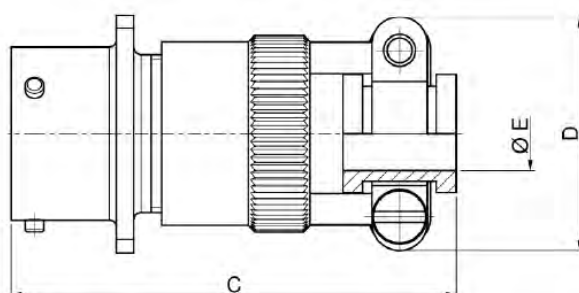


## LAYOUT DIMENSIONS

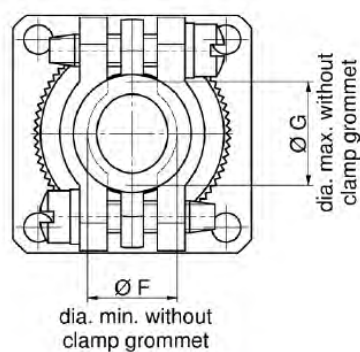
### STYLES 00E & 00F CONNECTORS



**Style 00E**  
Fixed, square flange mounting  
with grommet and grommet nut



**Style 00F**  
Fixed, square flange mounting with grommet  
and cable clamp

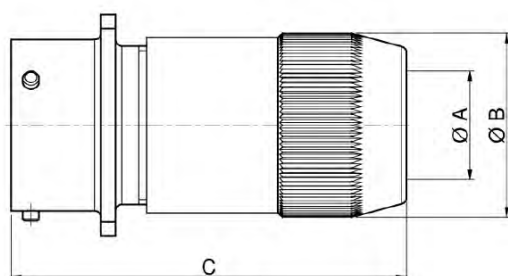


Shell size	A max [mm]	ØB max [mm]	C max [mm]	D max [mm]	ØE cable entry max [mm]	ØF min [mm]	G max [mm]
08	37.03	15.00	51.23	21.03	4.10	4.90	5.94
10	37.03	18.29	51.23	22.63	5.10	4.90	7.54
12	37.03	21.84	51.23	25.81	8.40	7.40	10.72
14	37.24	25.15	51.23	28.98	9.90	8.40	13.90
16	37.24	28.19	54.40	30.56	13.00	9.20	15.47
18	37.54	31.50	55.19	38.00	16.30	11.70	18.64
20	41.25	34.54	61.95	38.00	16.30	13.30	18.64
22	41.25	37.60	61.95	42.06	19.30	13.30	23.42
24	42.85	40.90	63.52	44.45	20.60	16.80	25.00

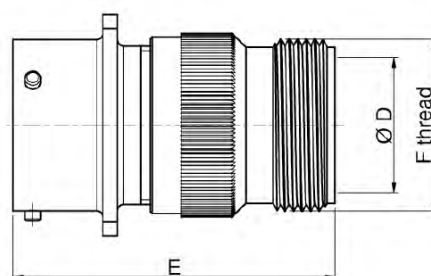


## LAYOUT DIMENSIONS

### STYLES 00J & 00EA CONNECTORS



**Style 00J**  
Fixed, square flange mounting  
with J sealing gland



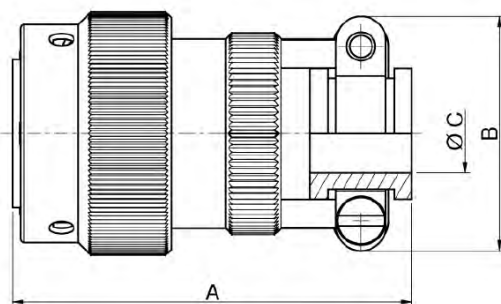
**Style 00EA**  
Fixed, square flange mounting  
with A endbell adaptor

Shell size	ØA cable entry max [mm]	ØB [mm]	C [mm]	ØD bore dia. [mm]	E [mm]	F thread to BS 1580 2A
08	5.8	14.27	42.69	8.38	41.42	0.5" – 28 UNEF
10	7.9	17.45	45.45	11.37	41.42	0.625" – 24 UNEF
12	11.2	20.62	45.61	14.55	41.42	0.75" – 20 UNEF
14	13.7	23.80	49.80	17.44	41.42	0.875" – 20 UNEF
16	15.6	26.97	56.03	20.62	41.42	1" – 20 UNEF
18	17.6	30.15	61.36	23.36	41.42	1.1875" – 18 UNEF
20	19.0	33.32	69.79	25.54	44.77	1.1875" – 18 UNEF
22	21.5	36.50	75.00	29.71	44.77	1.4375" – 18 UNEF
24	22.7	39.67	80.16	31.89	46.50	1.4375" – 18 UNEF



## LAYOUT DIMENSIONS

### STYLE 06F/06FG CONNECTORS STYLE 46F/46FG CONNECTORS

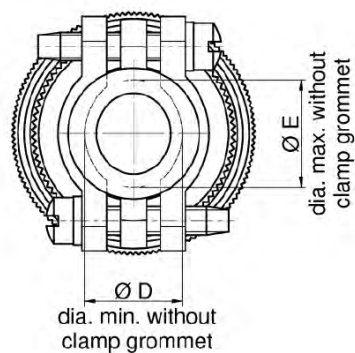


#### Style 06F

Free, fine knurled coupling nut  
with grommet and cable clamp

#### Style 06FG

Free, fine knurled coupling nut with grommet,  
cable clamp and grounding fingers



#### Style 46F

Free, coarse ribbed coupling nut  
with grommet and cable clamp

#### Style 46FG

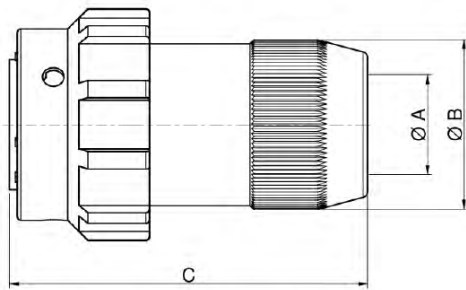
Free, coarse ribbed coupling nut with grommet,  
cable clamp and grounding fingers

Shell size	A max [mm]	B max [mm]	ØC cable entry max [mm]	ØD min [mm]	ØE max [mm]
08	50.82	21.03	4.10	4.90	5.94
10	50.82	22.63	5.10	4.90	7.54
12	50.82	25.81	8.40	7.40	10.72
14	50.82	28.98	9.90	8.40	13.90
16	54.40	30.56	13.00	9.20	15.47
18	55.19	38.00	16.30	11.70	18.64
20	59.56	38.00	16.30	13.30	18.64
22	59.56	42.06	19.30	13.30	23.42
24	61.13	44.45	20.60	16.80	25.00



## LAYOUT DIMENSIONS

### STYLES 06EA/06EAG & 06J CONNECTORS STYLES 46EA/46EAG & 46J CONNECTORS



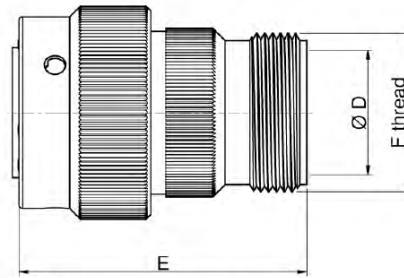
(Coarse ribbed coupling nut shown)

**Style 06J**

Free, fine knurled coupling nut with J sealing gland

**Style 46J**

Free, coarse ribbed coupling nut with J sealing gland



(Fine knurled coupling nut shown)

**Style 06EA**

Free, fine knurled coupling with A endbell adaptor

**Style 06EAG**

Free, fine knurled coupling with A endbell adaptor and grounding fingers

**Style 46EA**

Free, coarse ribbed coupling with A endbell adaptor

**Style 46EAG**

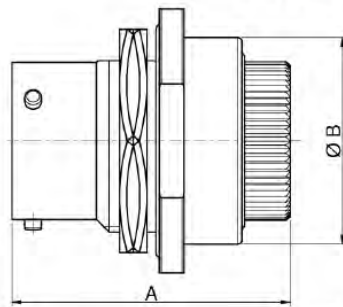
Free, coarse ribbed coupling with A endbell adaptor and grounding fingers

Shell size	ØA cable entry max [mm]	ØB [mm]	C [mm]	ØD bore dia. [mm]	E [mm]	F thread to BS 1580 2A
08	5.8	14.27	42.72	8.38	40.64	0.5" – 28 UNEF
10	7.9	17.45	43.48	11.37	40.64	0.625" – 24 UNEF
12	11.2	20.62	45.64	14.55	40.64	0.75" – 20 UNEF
14	13.7	23.80	49.83	17.44	40.64	0.875" – 20 UNEF
16	15.6	26.97	56.17	20.62	40.64	1" – 20 UNEF
18	17.6	30.15	61.39	23.36	40.64	1.1875" – 18 UNEF
20	19.0	33.32	68.01	25.54	42.18	1.1875" – 18 UNEF
22	21.5	36.50	74.00	29.71	42.18	1.4375" – 18 UNEF
24	22.7	39.67	78.15	31.89	43.91	1.4375" – 18 UNEF

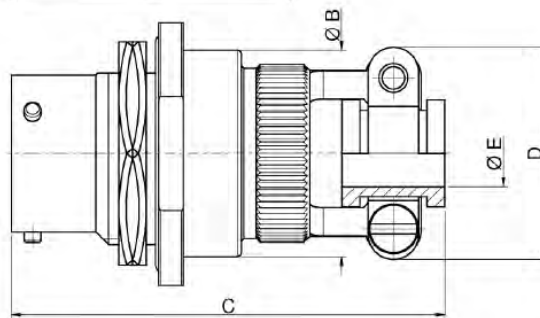


## LAYOUT DIMENSIONS

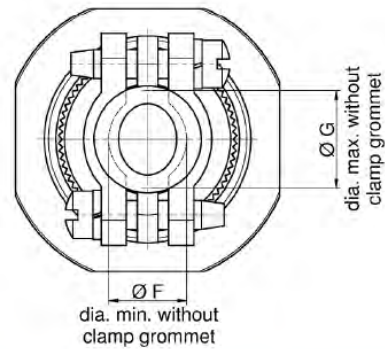
### STYLES 07E & 07F CONNECTORS



**Style 07E (BS C2098)**  
Fixed, single hole mounting with  
'O' ring panel seal, grommet and grommet nut



**Style 07F**  
Fixed, single hole mounting with  
'O' ring panel seal, grommet and cable clamp



dia. min. without  
clamp grommet

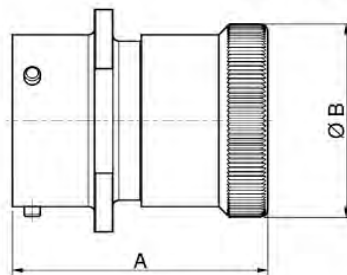
dia. max. without  
clamp grommet

Shell Size	A max [mm]	ØB max [mm]	C max [mm]	D max [mm]	ØE cable entry max [mm]	ØF min [mm]	G max [mm]
08	36.41	19.05	56.00	21.03	4.10	4.90	5.94
10	36.41	22.22	56.00	22.63	5.10	4.90	7.54
12	36.41	25.40	56.00	25.81	8.40	7.40	10.72
14	36.41	28.57	56.00	28.98	9.90	8.40	13.90
16	36.41	31.75	59.00	30.56	13.00	9.20	15.47
18	36.41	34.92	59.00	38.00	16.30	11.70	18.64
20	41.20	38.89	64.00	38.00	16.30	13.30	18.64
22	41.20	42.06	64.00	42.06	19.30	13.30	23.42
24	43.00	45.24	66.00	44.45	20.60	16.80	25.00

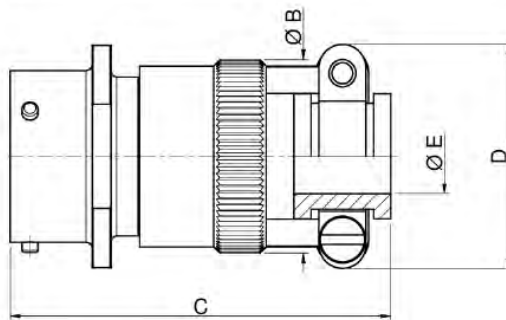


## LAYOUT DIMENSIONS

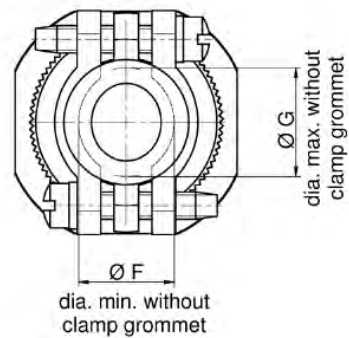
### STYLES 01E & 01F CONNECTORS



**Style 01E**  
Fixed, cable mounting with  
grommet and grommet nut



**Style 01F**  
Fixed, cable mounting with grommet  
and cable clamp

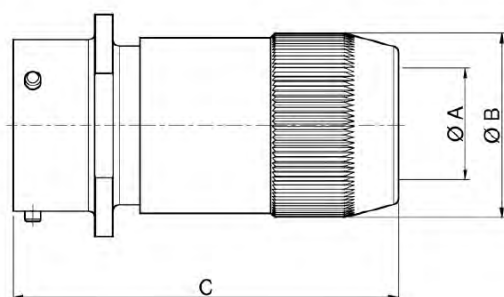


Shell size	A max [mm]	ØB max [mm]	C max [mm]	D max [mm]	ØE cable entry max [mm]	ØF min [mm]	G max [mm]
08	37.03	15.00	51.23	21.03	4.10	4.90	5.94
10	37.03	18.29	51.23	22.63	5.10	4.90	7.54
12	37.03	21.84	51.23	25.81	8.40	7.40	10.72
14	37.24	25.15	51.23	28.98	9.90	8.40	13.90
16	37.24	28.19	54.40	30.56	13.00	9.20	15.47
18	37.54	31.50	55.19	38.00	16.30	11.70	18.64
20	41.25	34.54	61.95	38.00	16.30	13.30	18.64
22	41.25	37.60	61.95	42.06	19.30	13.30	23.42
24	42.85	40.90	63.52	44.45	20.60	16.80	25.00

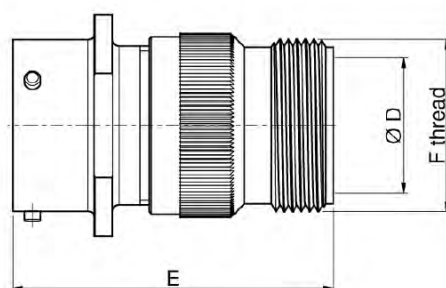


## LAYOUT DIMENSIONS

### STYLES 01J & 01EA CONNECTORS



**Style 01J**  
Fixed, cable mounting with J  
sealing gland



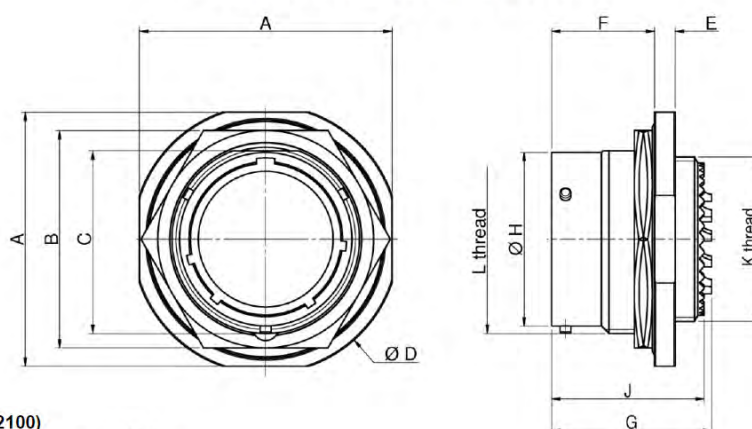
**Style 01EA**  
Fixed, cable mounting with A  
endbell adaptor

Shell size	ØA cable entry max [mm]	ØB [mm]	C [mm]	ØD bore dia. [mm]	E [mm]	F thread to BS 1580 2A
08	5.8	14.27	42.69	8.38	41.42	0.5" – 28 UNEF
10	7.9	17.45	45.45	11.37	41.42	0.625" – 24 UNEF
12	11.2	20.62	45.61	14.55	41.42	0.75" – 20 UNEF
14	13.7	23.80	49.80	17.44	41.42	0.875" – 20 UNEF
16	15.6	26.97	56.03	20.62	41.42	1" – 20 UNEF
18	17.6	30.15	61.36	23.36	41.42	1.1875" – 18 UNEF
20	19.0	33.32	69.79	25.54	44.77	1.1875" – 18 UNEF
22	21.5	36.50	75.00	29.71	44.77	1.4375" – 18 UNEF
24	22.7	39.67	80.16	31.89	46.50	1.4375" – 18 UNEF



## LAYOUT DIMENSIONS

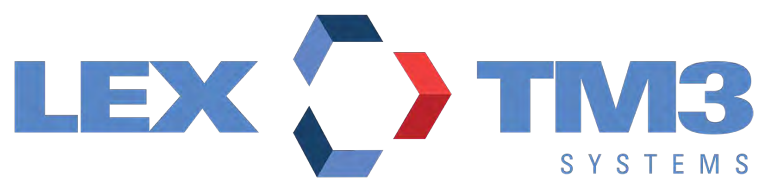
### STYLES 47T CONNECTORS



**Style 47T (BS C2100)**  
Fixed single hole mounting with 'O' ring  
panel seal and external accessory thread

Shell size	A max [mm]	B max [mm]	C max [mm]	ØD max [mm]	E max [mm]	F max [mm]	G max [mm]	ØH max [mm]	J max [mm]	L thread to BS 1580 2A	K thread to BS 1580 2A
08	24.23	19.48	13.46	27.38	3.48	15.75	26.41	12.04	25.91	0.5625" – 24 UNEF	0.4375" – 28 UNEF
10	27.38	22.66	16.63	30.55	3.48	15.75	26.41	15.01	25.91	0.6875" – 24 UNEF	0.5625" – 24 UNEF
12	32.15	27.41	20.77	35.33	3.48	15.75	26.41	19.08	25.91	0.875" – 20 UNEF	0.6875" – 24 UNEF
14	35.33	30.61	23.93	38.50	3.48	15.75	26.41	22.25	25.91	1" – 20 UNEF	0.8125" – 20 UNEF
16	38.51	33.76	27.08	41.68	3.48	15.75	26.41	25.43	25.91	1.125" – 18 UNEF	0.9375" – 20 UNEF
18	41.68	36.96	30.25	44.86	3.48	15.75	26.41	28.60	25.91	1.25" – 18 UNEF	1.0625" – 18 UNEF
20	46.43	40.11	33.42	49.63	4.27	19.55	30.48	31.78	28.45	1.375" – 18 UNEF	1.1875" – 18 UNEF
22	49.63	43.31	36.60	52.78	4.27	19.55	30.48	34.95	28.45	1.5" – 18 UNEF	1.3125" – 18 UNEF
24	52.78	46.46	39.78	55.96	4.27	20.30	30.48	38.13	29.97	1.625" – 18 UNEF	1.4375" – 18 UNEF





---

LexTM3 Systems  
Lex TM3 // Smart power, anywhere.TM  
#300 15751 SW 41 Street • Davie, FL 33331  
Phone: 954-888-1024  
Email: [info@lextm3.com](mailto:info@lextm3.com)